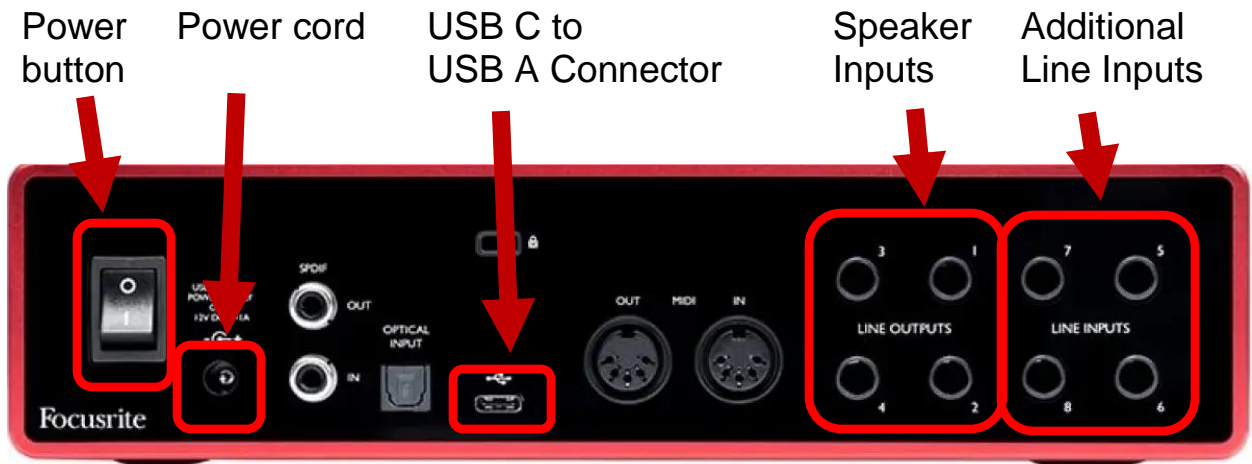
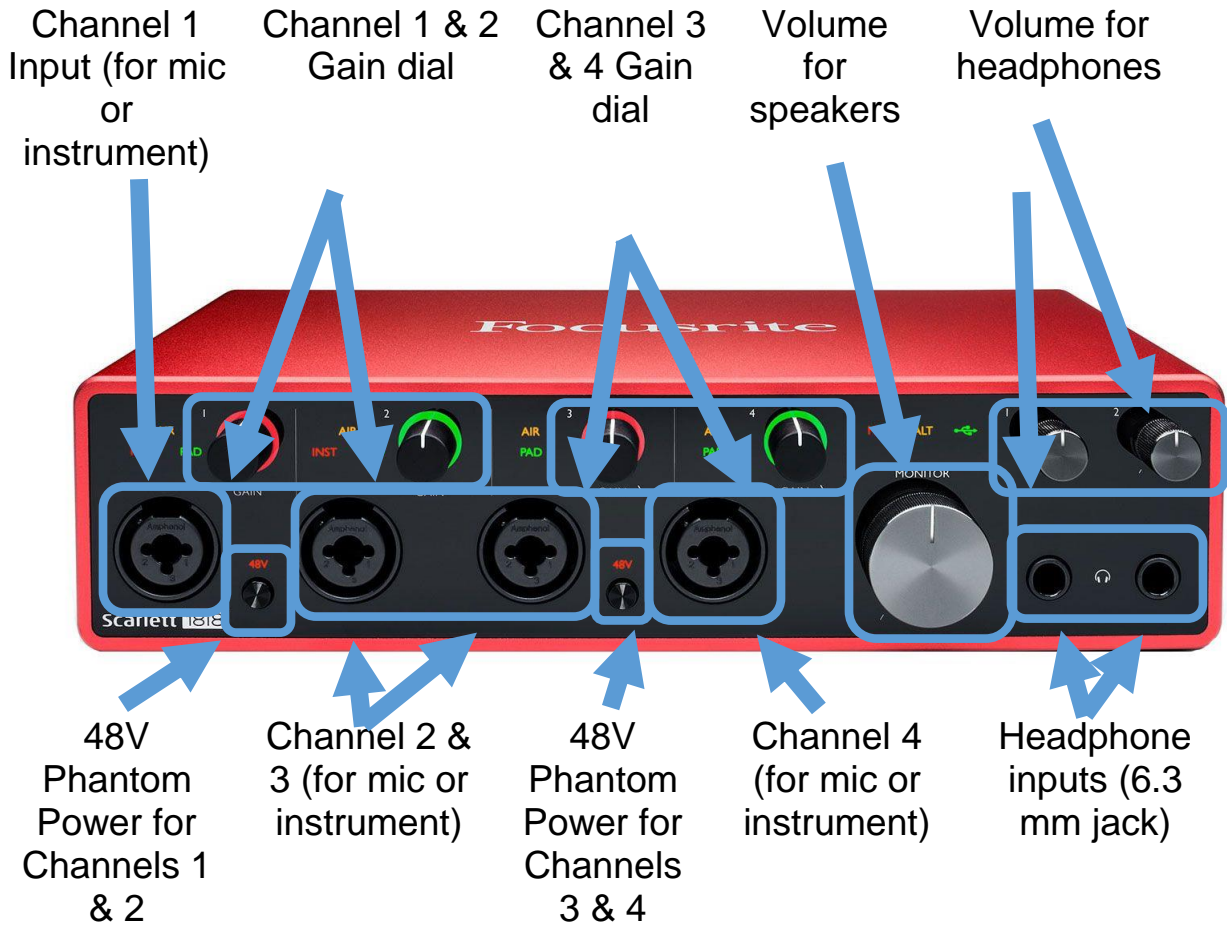


How to Record Audio Using the **Focusrite Scarlett 18i8**



Introduction

A *Focusrite Scarlett 18i8* is connected to Recording Studios 1 & 2 and can be used with a mic and DAW (digital audio workstation) to create studio-quality sound recordings. To use the Focusrite Scarlett 18i8, make a booking for either of the recording stations at any Service Desk. Please bring a storage device (USB, SD Card, portable hard drive) or have an online storage account (Google Drive, Box, Dropbox, etc.) for saving your recordings.



Instructions

1. Turn on the Focusrite Scarlett 18i8 with the power button in the back.
2. Start the Focusrite App.
3. Make sure the 48V light is on (it will glow green). If not, press the button to turn it on.
4. If using the two speakers:
 - a. Turn the volume button halfway on the front of the Focusrite.
 - b. Speak into the microphone to test the volume meter using the Focusrite App (see instructions for using the app).
 - c. Turn the gain knob slowly to the right while speaking into the microphone. There should be a green light around the knob each time you speak.
 - d. “Clipping” is distortion and can be seen when the light surrounding the gain knob turns from green to red. If clipping occurs, turn the gain to the left. Once the meter is at the correct peak, adjust the volume on the speakers.
5. If using closed back studio headphones:
 - a. Plug 6.35mm end of headphone jack into the front right side headphone input. (Requires adapter if the jack is 3.5mm.)
 - b. Up to two headphones can be used at a time.

1. Plugging in a microphone:

- a. Plug the *Fethead* (preamp) into a free channel on the front of the Focusrite Scarlett 18i8.
- b. Make sure the *48V phantom power* is ON. (The *Fethead* can also plug in between the mic and XLR cable.)
- c. Plug XLR cable into the Fethead preamp.
- d. Plug the other end of the XLR cable into the Shure 7mb Microphone.
- e. Set the GAIN dial to the middle (adjust after testing the recording level in the DAW).

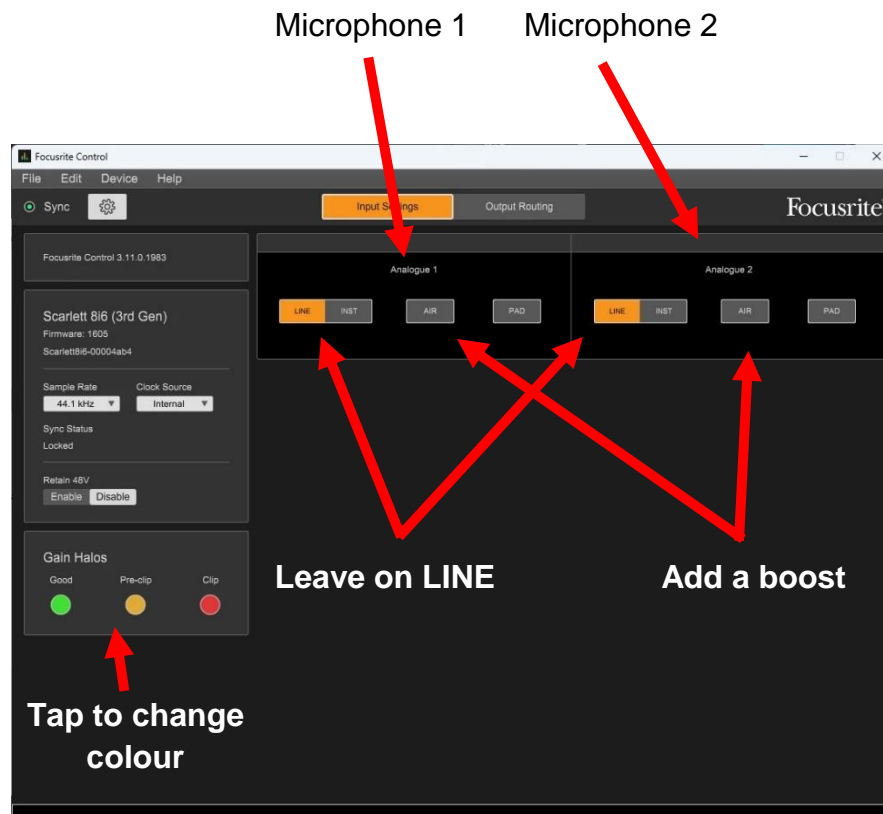
2. INSTRUMENT:

- a. Plug one end of a TS to TS cable into channel 3 (or 4) on the front of the Focusrite Scarlett 18i8.

- b. A TS to TS cable will fit into the centre of the channel input.
- c. Plug the other end of the TS cable into the instrument.
- d. Set the GAIN dial to the middle (adjust after testing the recording level in the DAW).

Focusrite Scarlett 18i8 Control App

The Focusrite Scarlett 18i8 Control App has two main sections: Input settings, how audio will enter the Focusrite Scarlett 18i8, and output routing, how audio will transfer from the Focusrite Scarlett 18i8 to the computer.



If microphones are plugged into the front channels 1&2, they will be represented as *Analogue 1&2* in the app. If instruments are plugged into

the front channels 3&4, they will be represented as *Analogue 3&4* in the app.

INPUT SETTINGS

Analogue 1&2:

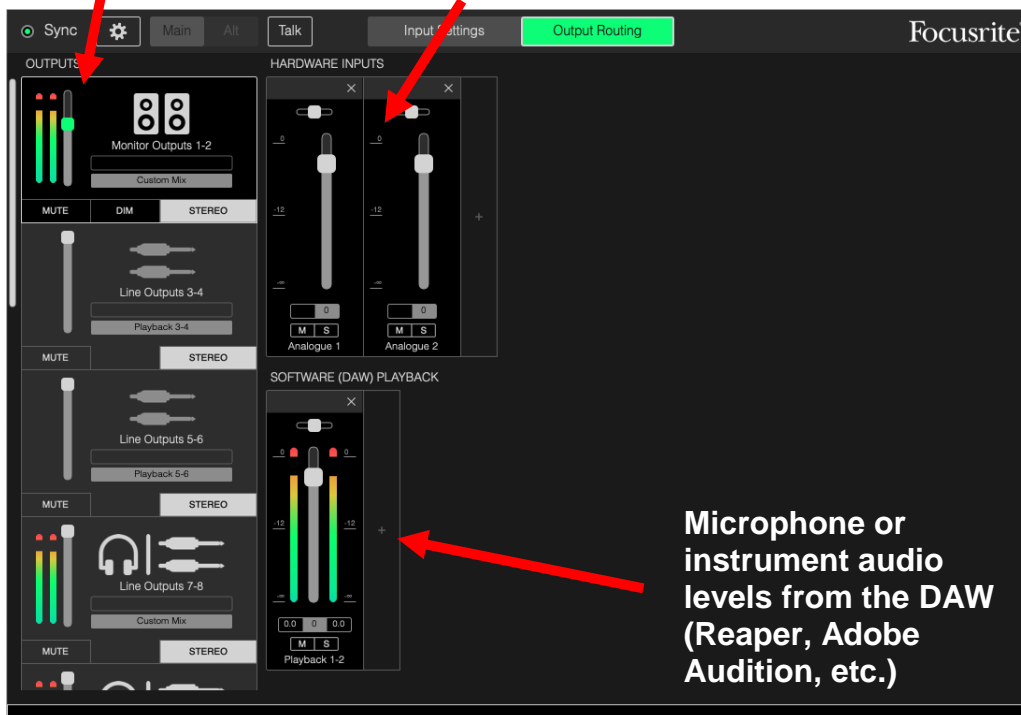
- a. The microphones use XLR cables and can be left on LINE.
- b. AIR can boost the volume of the microphones if needed.

Analogue 3&4:

- a. Select INST for instruments using a TS connection.
- b. PAD lowers the gain for loud instruments.

Speaker audio levels

Microphone audio levels from Focusrite



OUTPUT ROUTING

1. HARDWARE INPUTS (DIRECT MONITORING)

- a. Output directly from the FOCUSRITE. Any changes made in the DAW will not be heard using this channel.
2. SOFTWARE (DAW) PLAYBACK.
 - a. Output from the DAW (Audacity, Reaper, etc.) and any changes (filters, for example) will be heard.
3. Set outputs to CUSTOM MIX to hear both direct monitoring and DAW playback.
4. To add a hardware input or software playback, click the + beside each. A box will appear on the right.
5. Test the levels by speaking into the microphone. On the Focusrite Scarlett 18i8 you should see the GAIN knob turn green and in the app you should see bars beside hardware or software (or both). Turn the GAIN knob left or right to adjust the level.
 - a. When the GAIN knob is green, levels are good. Yellow, there is some clipping. Red, there is a lot of clipping.
 - b. You can change these colours to anything you'd like.

Last updated February 02, 2024 by JAM